

### President's Message

By Karen Sepulveda

College imprinted a tremendous amount of engineering knowledge, but ASCE left the greatest impression. The most vivid memories are late nights at Cal State, Long Beach cutting and welding steel, listening to oldies on the radio and dreaming of a regional steel bridge championship.



The feelings of pride and accomplishment resonating with this competition and have been unmatched elsewhere in my life. ASCE involvement is the reason many students continued on to a civil engineering undergraduate degree. Personally, ASCE is responsible for fostering my career path and securing lifelong friendships.

This past weekend the Pacific Southwest Regional Conference (PSWRC) was hosted by our very own California State University, Northridge. Students from 17 schools in California, Nevada, Arizona and Hawaii come to put their best engineering foot forward in over a dozen engineering-related competitions. The 18th school is a special guest, the Tokyo Institute of Technology. They are now a permanent guest to the PSWRC which further demonstrates the inclusiveness of the competition.

The winner of this year's overall conference title is California Polytechnic State University, San Luis Obispo. Their performance is always consistent and impressive. I send my warmest congratulations to the students, faculty and Branch on their success.

Although my days of welding and competing are over, my involvement to encourage engineering students is still in its infancy. Of the many competitive events that comprise a regional conference, my role is as a steel bridge judge, and I have done this regionally and nationally over the past five years.

Each time a school brings their bridge into my lane to construct and be evaluated, I empathize with the emotions they are experiencing. Each bridge represents the blood, sweat and tears of a year's work; a year of sacrifices which culminate in the day's achievements.

It didn't take much to convince my good friend and Section Secretary, Jay Higgins, to volunteer as a judge at this year's competition. Set on the task of reading a very thick book of steel bridge rules and clarifications (which is daunting to anyone who has not or even has seen the competition), Jay showed up before 7am on the morning of the event and left at the end of the competition smiling and slightly sunburned.

I encourage all ASCE professional members to take Jay's lead and volunteer each year at the PSWRC. The PSWRC reminds us of why we are excited about the profession. It teaches us humility as we witness the students' potential accomplished.

See **President** . . . Page 4

### Announcements

- MLAB endorses Blaine Leonard, P.E., for Society President-Elect
- Herendira Molina appointed as Branch Chair for K-12 Outreach Committee.
- 7th Annual Los Angeles Regional Bridge Building Competition for high school students held on March 20th at California State University, Los Angeles. ASCE Student Chapter assists
- MLAB Scholarship announced at 2008 Job Fair/Student Night. See [www.ascemlab.org](http://www.ascemlab.org) for details
- Gary Gallegos, Executive Director of SANDAG to speak at MLAB luncheon May 8th. More details to come through e-mail and on the Branch website

#### INSIDE:

- Legislation DC
- LA Infrastructure
- Sacramento Fly-In
- Branch Leader
- SAC Mixer

#### CONTENTS:

President's Message	1
Legislation in DC	2
Civil Engineering/LA Infrastructure	3-4
Sacramento Fly-In Day/ Are you Err..Wim..Pin	5-6
Branch Leader/ Forensic Dinner	7
SAC Mixer	8
ASCE Branch Awards	9
New ASCE Members	10
Calendar	11-12
Board Members	13
Classified	14-23
Membership Info	24

**ASCE**

Metropolitan

Los Angeles

Branch

**MLAB**

American Society  
of Civil Engineers

## MLAB Members Push for Infrastructure Legislation in DC

By Danielle Elkins, E.I.T.

On March 5th and 6th, MLAB members Serge Haddad, Jay Higgins, and I attended the 8th Annual Leadership Training in Government Relations (commonly known as “the D.C. Fly-In”) in Washington, DC. This event is a golden opportunity for ASCE members to learn more about how to communicate effectively with legislators. A significant portion of the trip was committed to training the 150 ASCE attendees on strategies to relate to various legislators.

Each attendant met a staff member for their respective District House Representative. Serge Haddad met with the office of HR Lucille Royal-Allard. Jay Higgins met with the office of HR Brad Sherman. I met with the office of HR Waxman. The meetings were brief but straightforward. The major bills were highlighted (listed below) and good questions were raised. The representatives are now aware that ASCE’s expertise in this area can be utilized when they are campaigning for infrastructure. There were six more ASCE members from the state of California (Region 9). All of us were scheduled to meet with a staff member in Senator Dianne Feinstein’s office.

The primary goal of the Fly-In was to help pass infrastructure related bills by bringing awareness to ASCE’s “Report Card for America’s Infrastructure”. The bills that were being addressed during the visit were: the Infrastructure Improvement Act, which establishes a national commission to complete a study on all matters of infrastructure to be presented to congress; The National Highway Bridge Reconstruction and Inspection Act, which authorizes 1 billion dollars to help bridge inspection, repair, and replacement; The Dam Rehabilitation Act, which addresses an estimated 10.1 billion dollars needed to repair the “high hazard” dams over the next 12 years with a mere 200 million dollars; The Water Quality Financing Act 2007, which would appropriate 14 billion over



*Danielle Elkins at the DC Fly-In*



*ASCE President David Mongan and Past President Bill Marcuson attend DC Fly-In*

four years for construction and repair of our aging wastewater treatment plants; the Highway Trust Fund Act, which would provide additional needed funds to make up for the 36% of the SAFETEA-LU funds congress guaranteed that the Bush Administration did not include in their 2009 budget.

To read a full blog written by attendee Danielle Elkins please visit ASCE’s infrastructure blogging site at <http://live.asce.org/blog/1/asce/null?permlink=Civil-Engineers-in-Washington.html>. If you are interested in getting more involved with public policy, then please become an ASCE Key Contact or ask to attend the Region 9 Fly-In next year!

## “Let’s Promote Civil Engineering”

By Herendira Molina

On the morning of February 22, 2008, we visited Polytechnic High School in North Hollywood to promote and raise awareness about the importance of the civil engineering profession. The group of volunteers were Karen Sepulveda - MLAB President, Don Sepulveda - Section President-Elect, Pedro Barragan - CSUN Student, Tony Tew - former CSUN Student, and I, Herendira Molina - MLAB YMF Vice President. We visited two ROTC classes and presented PowerPoint slides on “What is Civil Engineering?” and led an activity. The goal of our activity was to bring out the engineer in every one of the students. It was an exciting moment to see teams of 4 or 5 students work to build the tallest standing structure made out of plastic straws and a limited amount of masking tape. As the students

worked diligently towards being the winning team, we walked around observing their enthusiasm and competitive spirit. After 5 minutes into the tallest standing straw structure competition, time was up and we began testing to see which structures remained stable for at least 3 seconds. Many structures collapsed under the loads applied. Fortunately, some students were able to construct tall structures that withstood the applied forces. The presentations and the activities were such a great success that Polytechnic High School asked us to return every semester. On behalf of the volunteers I would like to thank everyone who helped make this event possible. We look forward to our next visit.



*CSUN Student, Pedro Barragan, looks on as students builds towers*



*Section President-Elect, Don Sepulveda, discusses ASCE with ROTC teacher*

## A Future Outlook on City of Los Angeles Infrastructure

A Presentation by the City Engineer, Gary Lee Moore, P.E.

By Serge Haddad, P.E.

On Tuesday, January 29, MLAB held its first luncheon in a series of six for the 2007-2008 year. A record attendance of 110 people came out to hear a presentation by Gary Lee Moore, P.E., City Engineer for the City of Los Angeles (City) Bureau of Engineering (BOE). The audience was filled with contractors, consultants, students, and various government employees. MLAB Officers and Committee Chairs in attendance included Karen Sepulveda, Steve Milewski, Stacie Takeguchi, Maria Lopez, Andrroush Danielians, and Serge Haddad. Jay Higgins, Los Angeles Section Secretary was also present, along with the following Younger Member officers: Julia Moye, Marlon Calderon, Cesar Moran, George Huang, and Alex Moreno.

Before the crowd at the Omni Hotel in Downtown Los Angeles, Mr. Moore focused his presentation on BOE projects currently in design and construction and shared insights into the City’s future infrastructure plans. Both the Green Building program and the Los Angeles River master plan were highlighted.

After seeing the presentation, Julia Moye, an active ASCE officer and BOE employee, stated, “Learning about all of the projects being completed by the BOE made me proud to be a part of the organization. It feels good to see other local agencies learn about the wide range

See **LA Infrastructure . . . Page 4**

**LA Infrastructure ...** from Page 3

of projects that we deliver.” Julia Moye currently works for BOE’s Wastewater Conveyance Construction Division.

BOE is currently managing \$1.5 billion worth of projects in construction and expects \$3 billion worth of construction projects in the next three years. The Bureau of Engineering oversees the design and construction of all City facilities in-



*Gary Lee Moore accepts Employer Recognition Award presented by Karen Sepulveda and Marlon Calderon*

cluding fire stations, libraries, police stations, animal care facilities, and the zoo. Under the City Engineer’s leadership, BOE is also responsible for projects that maintain, expand, and improve City facilities, parks, streets, bridges, wastewater treatment plants, sewers, storm drains, and regulate private development affecting the public right-of-way.

Mr. Moore’s presentation highlighted the Green Building program as a major initiative for both the Mayor and City Council. Sustainability in design has become a priority not only for City politicians, but politicians at the State and National level. In addition to requiring that all new City facilities obtain LEED certification, the City is encouraging private developers to meet LEED certification by expediting the plan check and approval process of buildings with a LEED certification of Silver or higher (“Silver” denotes the building receiving 33-38 credits). The Los Angeles River master plan alone has the potential of incorporating 239 projects. Renderings of what is planned for the Los Angeles River were shared with the audience. Part of the project’s scope is to increase storage capacity along specific stretches of the river, resulting in a decrease in water level along other parts of the river. These areas could then be remodeled in order to create a more recreational and accessible facade.

The luncheon concluded with celebration as Mr. Moore accepted a certificate from ASCE’s Committee on Younger Members (CYM) recognizing the City of Los Angeles, Bureau of Engineering for ‘Encouragement and Exemplary Support of Younger Member Involvement in ASCE Activities’. Each year, these certificates are awarded through the CYM and signed personally by the current National ASCE President, David Mongan. Marlon Calderon, a BOE employee currently working on the construction of the Police Administration Building, nominated BOE for this prestigious award. MLAB was honored to recognize an employer that makes a conscience and consistent effort to encourage its younger members in their career and personal development.

BOE won the award for the second consecutive year. “I am very proud of the strong and active partnerships between ASCE and the Bureau of Engineering. I am especially grateful for the partnership on the high school bridge building competition,” stated Mr. Moore upon receiving the award. MLAB ASCE looks forward to more successful luncheons and hopes to see a greater turnout in the future.

**President ...** from Page 1

MLAB is proud to serve five of the eighteen participating universities in this conference (CSULA, CSUN, LMU, UCLA, and USC). I’d like to acknowledge the Branch members who gave so generously of their time to be volunteers and judges:

- Jay Higgins, *Section Secretary and MLAB President’s Advisory Council*
- Don Sepulveda, *Section President-Elect*
- Androush Danielians, *MLAB President-Elect*
- Serge Haddad, *MLAB Vice President*
- Julian Garcia, *MLAB Student Activities Chair*
- Heren Molina, *MLAB K-12 Outreach Chair*
- Cesar Moran, *MLAB YMF President*
- Marlon Calderon, *MLAB YMF President-Elect*
- Danielle Elkins, *MLAB YMF Secretary*
- George Huang, *MLAB YMF University Outreach Chair*
- Julie Kentosh, *UCLA Practitioner Advisor*

We’ll see you next year at the PSWRC! Oh, by the way, the 2009 conference will be held in Hawaii!



Metropolitan

Los Angeles

Branch



American Society  
of Civil Engineers

## Sacramento Legislative Fly-in Day - February 20, 2007

By Cesar Moran, P.E., MLAB YMF President

On February 20th, YMF and Branch representatives from the Los Angeles Section joined ASCE members from other Region 9 Sections to meet their respective State Legislators. Thanks to the hard work of Mike Thornton, the Region 9 Legislative Chair, we all had a full day scheduled with representatives from Governor Schwarzenegger's office and 52 of our 120 legislators throughout the day. Our task was simple: to inform legislators of the importance of funding infrastructure and to let every politician know that ASCE is here to provide guidance from a professional point of view.

The day started with a quick breakfast and briefing. Many had taken the first flight into Sacramento and were trickling into the small conference room. The room was alive with discussions about what to expect that day. This would be my first time meeting a legislator, and I didn't quite know what to expect. I solicited the advice of those around me. I was a little nervous and excited at the same time. Before I knew it, the briefing was over and it was show time. I had a binder with my schedule and talking points ready, I wished everyone else good luck and was on my way.

We set out in teams of two. I was partnered up with Danielle Elkins, who participated in the Washington DC Fly-in last year. We made our way through the maze of the Capitol Building and found the office for our first appointment. We were quickly seen by a member of Senator Jack Scott's staff, who listened attentively to our presentation. After we concluded our presentation it was time for the real test. What questions was she going to ask? Was I prepared, or even qualified to answer them? I mean, here I was in an office where decisions were made on how much to invest in our State's infrastructure. Surely everyone here is well versed in the ins and outs of how vital our State's ports, dams, roads, and waters are.

As we began our dialogue, I realized that the legislators in Sacramento can learn a lot from Civil Engineers. After all, who else sees Public Works projects from beginning to end? We engaged in a 30-minute discussion and talked about how important it is to maintain what we currently have, educate our youth in math & science, and how we can complete construction projects on time and under budget by reducing red tape.

At the end of our appointment, we found that the challenge we face in the California Legislature is not that anyone disagrees with having clean water, safe bridges, safe dams, and an efficient transportation system; but that it is not important enough to make it to the top of the list when it comes to funding. This story was repeated throughout the day as we went from office to office. Although we didn't make any sweeping reforms, we know that with each meeting we had at least some impact on the way our representatives feel about our state's infrastructure.

The one thing that stood out on our visit to the State's Capitol was that the Capitol is swarming with visitors; each group advocating for their own interest. I believe that as Civil Engineers we should be the leaders in advocating for our infrastructure, not simply the technical background that gets passed around in leaflets. By beginning a dialogue with our political leaders, ASCE has begun to establish this important relationship. As we mature these relationships, we hope that you will join us in future Legislative Day's and activities. After all, we are the experts!

### Are you Err . . . Wim . . Pin?

By Hector Bordas, P.E.

Many of you are probably aware of the major initiative taking place throughout many regions in California whose goal is to address water resource needs in a collaborative and integrated fashion. This initiative is the Integrated Regional Water Management plan development and implementation. IRWMP or "err . . . wimp" for short.

The Greater Los Angeles County IRWM Region came together as a result of leadership and goal driven efforts by many stakeholders who realized that the only way to truly address the local water supply, water quality, polluted runoff, groundwater, and flood protection issues is by working together on the problems.

The Greater LA IRWM effort is organized into five sub-regions that have their individual decision-making structure. Each sub-region has a chair and co-chair that are responsible for guiding the development and implementation

See **Err . . Wim . . Pin . .** Page 6

**Err...Wim...Pin . . .** from Page 5

of the IRWM effort in their sub-region. Many stakeholders including cities, water agencies, conservancies, districts, and non-governmental organizations play an active role in the sub-regional steering committees. The chair and co-chair of each sub-region then sits on the Leadership Committee along with five “water management representatives” and the Los Angeles County Flood Control District that acts as the chair of the Committee.

The water management representatives are nominated by the sub-regions and are appointed by the Leadership Committee or the LC, as it is typically known. Specialists in the field of groundwater, open space, sanitation, stormwater, and surface water are appointed as water management representatives. These folks bring a wealth of knowledge and experience to the table and are invaluable when it comes to discussions on issues that affect the entire Greater LA IRWM region. The LC is responsible for coordinating the entire effort across the five sub-regions.

The Greater LA IRWM effort is a monumental effort that had many successes and has overcome challenges that are typical of any new and evolving initiative. The Greater LA effort is seen as a role model and the one to watch and learn from by other IRWM efforts throughout the State.

An on-going challenge is to get as many cities as possible in the Greater LA IRWM region involved in the effort. Having more cities participate in this collaborative process provides opportunities to leverage limited resources with those of other organizations to get more bang for their dollar. A bigger plus are the relationships that are forming as organizations learn from each other and share ideas and solutions that benefit others. Additionally, the State, through the Department of Water Resources and the State Water Resources Control Board, makes grants available to develop IRWM plans and implement the projects in the plans.

For additional information regarding the Greater Los Angeles County IRWM planning effort please visit [www.lawaterplan.org](http://www.lawaterplan.org) or contact Hector J. Bordas, Los Angeles County Flood Control District, at 626/458-5947 or [hbordas@dpw.lacounty.gov](mailto:hbordas@dpw.lacounty.gov).

**MLAB YMF Activities**

By Cesar Moran, P.E., MLAB YMF President

*Cheerful faces of the Younger Members Forum*

**S**o far MLAB Younger Members Forum (YMF) has had quite an eventful year. We have had record attendance at almost all of our events, which is getting more popular every time. Some of our most successful events have been the P.E. Review Course, General Meetings, the Western Younger Member Council Conference (WRYMC), Legislative Day, and the Annual Student Night and Job Fair. Our social events, which have been selling out almost every time, include our Mammoth Ski Trip, Comedy Night at the Ice House, and Hockey Night at the Staples Center.

This year MLAB YMF is trying to reinforce a sense of community between our Younger Members. We provide our members with opportunities to interact not only in structured environments such as technical tours and conferences, but also in informal settings such as happy hours and sporting events. The interests of our members cover a wide spectrum of activities, which is why we have begun to host General Meetings on a regular basis. General Meetings allow young engineers to come together, network with each other, learn what MLAB YMF is doing to support their professional and personal growth, and hopefully take home a little extra knowledge from our key note speakers.

It is my goal to continue to build MLAB YMF as a community where our members have access to one of their greatest resources, each other. As we move forward, keep an eye out for the upcoming whitewater rafting trip, annual wine tasting trip in Santa Barbara, General Meetings, Golf Tournament, and numerous community service opportunities throughout the year. For a complete list of events, be sure to visit our website at [www.mlab-ymf.org](http://www.mlab-ymf.org).

## How to Be a Successful Section/Branch Leader

By Keyvan Fotoohi, Ph.D., P.E., G.E.

The Workshop for Section and Branch Leaders (WSBL), in conjunction with the Workshop for Student Chapter Leaders (WSCL) and the Younger Member Council Meeting (YMC) of Region 8 and 9, was conducted at the South Point Hotel in Las Vegas, Nevada, on February 8 and 9, 2008. Region 8 has 12 sections: Alaska, Arizona, Columbia, Hawaii, Inland Empire, Montana, Nevada, Oregon, Seattle, Southern Idaho, Tacoma-Olympia, and Utah. Region 9 has four sections: Los Angeles, Sacramento, San Diego, and San Francisco.

This workshop was sponsored by the Committee on Geographic Units. The objective of the workshop was to increase capacity-building potential of the Region 8 and 9 Sections and Branches through exchange of ideas and information on timely and important subjects of vital concern to the society and local community. It also prepared incoming officers for their leadership roles. The workshop continued with interactions between ASCE's National and Region Officers, Staff, other Section/Branch Officers, Students, and Younger Members. The delegates shared their experience and learned more about ASCE, available resources, opportunities for services, and their role in the dynamic ASCE system.

The workshop started with a brief introduction by Westley Chun, Ph.D., P.E., DEE, F. ASCE, Conference Facilitator and Director of Region 8, which was followed by a short talk by David Mongan, P.E., F.ASCE, the 2008 ASCE president. During two days of the workshop, several speakers presented their experience and knowledge about leadership in ASCE and their personal achievements in their works and social life. They talked about various subject such as: the history of ASCE, how to organize a successful board meeting, techniques for finding and keeping new ASCE members, how Policy 465 will impact our members, and what the lessons we learned from Hurricane Katrina. There was an interesting presentation titled "How to avoid the deadly sins of a board meeting" which was presented by a group of seven members in the form of a theatrical show on stage. During lunch on the second day, there was a CEO Forum in which four successful ASCE members from private firms, public firms, and

academia answered questions about how they have achieved success in their careers.

During the workshop, the Section and Branch Leaders had the opportunity to choose and participate in one of the five discussion groups to learn the skills they most needed. The discussion groups included: ASCE Finances and its Impact on the Section/Branches, Report Cards and Leveraging National, Updating Your Governing Documents, Conducting Effective Meetings, and Dealing with Generational Difference. The Workshop finished with a Webinar seminar. Attendees in Webinar seminar were able to gain PDH credits while learning about a valuable engineering management topic.

Prior to the workshop, there were also four special events for delegates to attend on February 7, 2008. The special events included Liquid Assets: The History of our Water Infrastructure, Design Squad and Childhood Favorite-Curious George, Post-Disaster Safety Evaluations Training Workshop, and Secrets of High-Performing Advocates that are Safe for Everyday Use.

### Forensic Technical Group Holds Kick-off Dinner

By Allison Faris

The Forensic Technical Group had a very successful kick-off dinner meeting on February 12, 2008. About 45 people attended the event. Charlie Harris, Esq., partner with the law firm Lewis, Brisbois, Bisgaard & Smith LLP, gave a presentation on the "lifesaver" role of an expert witness. He described the function of an expert witness at various stages of a case, from the perspective of a defense attorney. Charlie also spent some time describing how he selects an expert, specifically looking at experience, presentation and availability. The next quarterly meeting of the forensics group is tentatively set on May 20th. Please stay tuned for more details.

### SAC Mixer at LMU

By Marcela Maduro, LMU ASCE Student Chapter President

The second Student Activities Committee (SAC) mixer of this fiscal year was hosted by ASCE|LMU. Meetings held by the Metropolitan Los Angeles Branch (MLAB) and the Younger Member Forum have always been geared toward learning about each chapter's activities, improving together as a branch, and most importantly networking amongst the five MLAB schools.

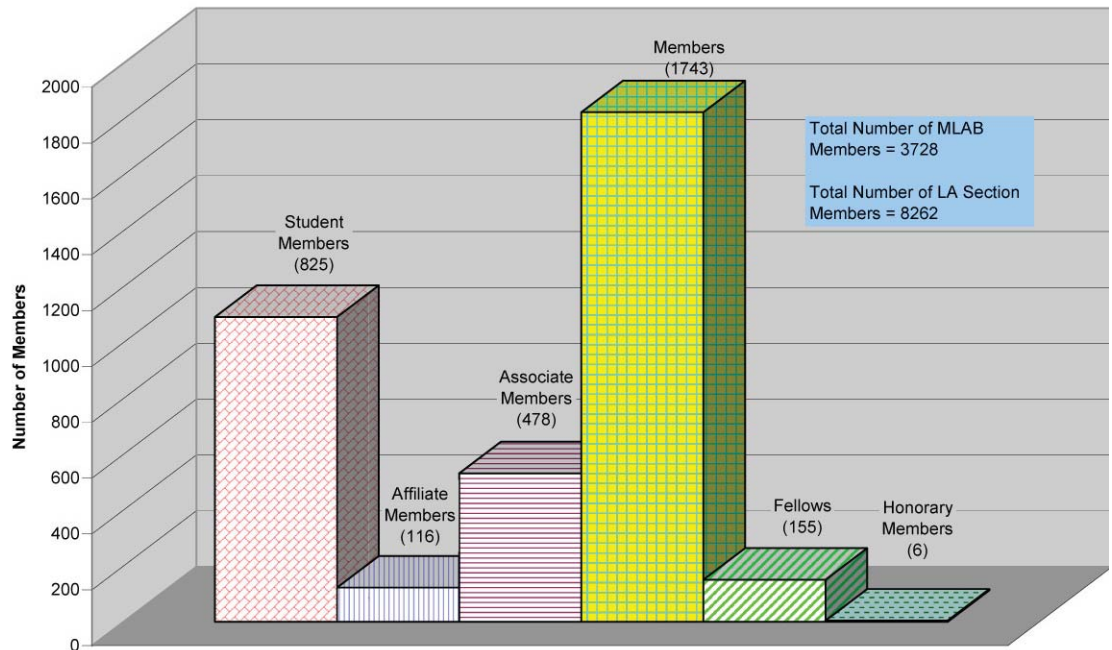
Mixers put on by MLAB have proven to be a key for success amongst all student chapters. On the agenda were various important topics and deadlines to be discussed and made aware to the representatives of each school. Julian Garcia and George Huang, the representatives from MLAB talked about the upcoming Workshop for Student Chapter Leaders (WSCL), annual report, and scholarships. In addition, each student chapter discussed their current status with student retention, faculty involvement/support, and ways of fundraising money.



Attendees of this year's second Student Mixer

As a united branch, we will be able to accomplish much more, and expand our abilities. Everyone at the meeting was very encouraging to one another; we all want our chapters to improve as a whole and we look forward to the third and final SAC mixer of the year!

### Metropolitan Los Angeles Branch (MLAB Member Grades for Breakdown



**ASCE**

Metropolitan  
Los Angeles  
Branch

**MLAB**

American Society  
of Civil Engineers

## ASCE Metropolitan Los Angeles Branch Awards

By Hector Bordas, Awards Committee Chair

**D**o you know any outstanding Civil Engineers that further advance the field of civil engineering through their efforts? What about civil engineering projects that showcase innovative ideas that improve the quality of life for the public? We all do and this is your opportunity to recognize these Civil Engineers and projects.

Each year the Branch awards outstanding Civil Engineers and projects for their contributions to ASCE, the civil engineering community, and the public. Nominations are now welcome for the 2007-08 Fiscal Year in the following categories:

- Outstanding Civil Engineer in Government
- Outstanding Civil Engineer in Private Sector
- Outstanding Civil Engineer in Community Service
- Outstanding Younger Civil Engineer
- Student Chapter Practitioner Advisor Award
- Student Chapter Faculty Advisor Award
- Awards for Technical Excellence
- Outstanding Government Civil Engineering Project
- Outstanding Private Sector Civil Engineering Project
- Outstanding Public/Private Sector Civil Engineering Project
- Life Member Achievement Award



Please note that nominees must be members of the Branch and that projects need to be located within Los Angeles County. You may submit your nominations to:

**Hector J. Bordas**  
**Chair, Awards Committee**  
**LA County Dept. of Public Works**  
**Watershed Management Division,**  
**11th Floor**  
**900 S. Fremont Ave.**  
**Alhambra, CA 91803**

Nominations will be accepted through June 30, 2008. For information regarding the awards please visit the Branch website at [www.ascemlab.org](http://www.ascemlab.org) or you may contact Hector at 626/458-5947 or [hbordas@dpw.lacounty.gov](mailto:hbordas@dpw.lacounty.gov).

We look forward to your nominations!

## New ASCE MLAB Members

Abellera	Lourdes	Gonzalez	Mark	Padilla	Juan
Aguilar	Annabel	Grahek	Amy	Parsa	Nima
Alcala	Jimmy	Gunnewegh	Aloysius	Payman	Khalili_Tehrani
Alvarado	Francisco	Guzman	Marcelo	Pedersen	Kurt
Amirkhanian	Jora	Guzman	Luis	Peer	David
Ashurst	Autumn	Harlow	Matthew	Percell	Karl
Avedisian	Harout	Harnisch	Rory	Pereira	Mario
Awad	Lara	Hidalgo	Roberto	Petra	Guillermo
Azzi	Stephen	Hoffman	Chelsea	Plotnik	Michael
Bandi	John	Hwa-Chang	Miles	Pollard	Julie
Banuelos	Ben	Jaramillo	Aracely	Powell	Michael
Bou	David	Jenison	Josiah	Rodriguez	Ruben
Bozorgnia	Behrouz	Kazemi	Kamran	Runyan	Matthew
Brown	Andrea	Kirschner	Paul	Sager	Gary
Butler	Ryan	Klein	Laura	Saldivar	Cesar
Cabico	Ashley	Koepp	Cassandra	Saraiya	Anish
Campbell	Robert	Kong	Edward	Shermin	Nusrat
Casey	Christopher	Kroner	Kurt	Shimabukuro	Geraldine
Castellanos	Gabriel	La Vern Beall	Rick	Sologub	Mila
Chan	Yick Cheung	Law	Alan	Song	Hantong
Charles	Collen	Lee	Adam	Songhorian	Damoon
Chen	Duncan	Li	Jeffrey	Soria	Denise
Chen	Ning	Lim	Elisa	Soriano	Reyna
Chin	Eric	Lin	Zay	Stewart	Melissa
Ching	Mark	Linn	Kyaw	Stroup	Garrett
Chow	Yunling	Liu	Andrew	Taing	Steven
Chui	Chung Leung	Liu	Qin	Tarafder	Nandini
Copeland	Matthew	Lovrovich	Michael	Taylor	Mark
Correa	Adrian	Marapao	Hilarion	Teddy	Luong
David	Daniel	Marquez	Steven	Tieu	Sam
De Castro	Canddice	Masseti	Steven	Toghia	Jennifer
Del Valle	Eugene	Medellin	Jimmy	Vandenberg	Christiaan
Delarossa	Otavio	Moheet	Mohammad Reza	Villar	Danielle
Duarte	Sergio	Monzon	Marcia	Watabutr	Ratana
Dulac	Alexandre	Moore	Benjamin	Whitman	Eliza
Escajeda	Jose	Mucogllava	Zoe	Williams	Jacob
Faruqui	Uzair	Muradyan	David	Willis	Paul
Foroughi	Mahsa	Nazerian	Harout	Wong	Alison
Frank	Kenneth	Nguyen	Khanh	Yee	Rick
Gallyer	Steven	Novelo	Ricardo	Yee	Sara
Gonzalez	Joel	Ochoa	Misael	Yu	Kevin



Metropolitan  
Los Angeles  
Branch



American Society  
of Civil Engineers

The Metropolitan Los Angeles Branch is looking for interested members to serve on the following Committees:

- |   |                                     |   |   |
|---|-------------------------------------|---|---|
| <input type="checkbox"/> Awards             | <input type="checkbox"/> Membership | <input type="checkbox"/> Programs           | <input type="checkbox"/> Student Activities |
| <input type="checkbox"/> Government Affairs | <input type="checkbox"/> Newsletter | <input type="checkbox"/> Public information | <input type="checkbox"/> Technical Groups   |

Name: \_\_\_\_\_

Phone: \_\_\_\_\_ Fax: \_\_\_\_\_

E-Mail: \_\_\_\_\_

If you are interested in serving on a Metropolitan Los Angeles Branch committee, please check the appropriate box, fill in necessary information below, and return to: 818-309-9649 Fax: 818-840-0651 E-mail: kar@sepulvedas.net

## Calendar of Upcoming Events

### May 2008

- 8 MLAB Monthly Luncheon... 11:30 am - 12:30 am  
Location TBD  
Guest Speaker: Mr. Gary Gallegos, Executive Director of SANDAG
- 13 YMF Monthly Meeting ... 5:30 pm - 7:00 pm  
1149 South Broadway, Los Angeles  
City of Los Angeles, 7th Floor Conference Room  
Free Parking and Light Dinner
- 15 Practitioner and Facility Advisor Training Workshop Deadline
- 15-16 Construction Administration for Engineers (Construction/Development)  
ASCE Spring/Summer 2008 Continuing Education Seminar  
San Francisco, CA
- 15-16 Structural Design of Residential Buildings using the 2006 International  
Residential Code (Structural)  
ASCE Spring/Summer 2008 Continuing Education Seminar  
San Francisco, CA
- 21 MLAB Monthly Meeting ... 5:30 pm - 7:00 pm  
1149 South Broadway, Los Angeles  
City of Los Angeles, 7th Floor Conference Room  
Free Parking and Light Dinner
- 23-24 National Steel Bridge Competition  
Location: Gainesville, Florida
- 29-30 Earthquake Induced Ground Motions (Structural/Geotechnical)  
ASCE Spring/Summer 2008 Continuing Education Seminar  
Long Beach, CA

## Calendar of Upcoming Events (cont'd)

### June 2008

- 5-6 Structural Condition Assessment of Existing Structures (Structural)  
ASCE Spring/Summer 2008 Continuing Education Seminar  
San Diego, CA
- 10 YMF Monthly Meeting . . . 5:30 pm - 7:00 pm  
1149 South Broadway, Los Angeles  
City of Los Angeles, 7th Floor Conference Room  
Free Parking and Light Dinner
- 11-13 HEC-RAS Computer Workshop for Unsteady Flow (Hydraulics)  
ASCE Spring/Summer 2008 Continuing Education Seminar  
Sacramento, CA
- 16 MLAB Monthly Meeting . . . 5:30 pm - 7:00 pm  
1149 South Broadway, Los Angeles  
City of Los Angeles, 7th Floor Conference Room  
Free Parking and Light Dinner
- 19-21 National Concrete Canoe Competition  
Location: TBA
- 26-27 Leadership and Development for the Engineer (Management and Leadership)  
ASCE Spring/Summer 2008 Continuing Education Seminar  
San Diego, CA

For a complete listing of seminars, please go to <http://www.asce.org/conted/seminars/>



Metropolitan  
Los Angeles  
Branch



## Executive Board Members and Committee Chairs

**President** **Karen Sepulveda**  
818-309-9649  
kar@sepulvedas.net

**President Elect** **Androush Danielians, P.E., DSC**  
213-593-8402  
androush.danielians@dmjmharris.com

**Past President** **Cung Nguyen, P.E.**  
818-896-0594  
cunguyen@dpw.lacounty.gov

**Vice President** **Serge Haddad, P.E.**  
213-978-2074  
serge.haddad@lacity.org

**Secretary** **Andy Duong**  
714-730-2318  
andy.g.duong@hdrinc.com

**Treasurer** **Steve Milewski, P.E.**  
626-458-5988  
smilew@dpw.lacounty.gov

**Government Affairs** **Edgar Dymally, P.E.**  
213-217-5709  
edymally@mwdh2o.com

**Membership** **Ciara Barnett, P.E.**  
626-319-0441  
cbarnett@ladpw.org

**Newsletter Editor** **Julia Park**  
310-536-0011 ext. 152  
jpark@tecolote.com

**Programs Co-Chair, Monthly Luncheons** **Maria Lopez, P.E.**  
213-217-5709  
asce\_mlab@yahoo.com

**Programs Co-Chair, Tours and Events** **Stacie Takeguchi, P.E.**  
626-458-4343  
stakeguchi@mw2o.com

**Public Information** **Joe Habboush**  
ejhabboush@verizon.net

**Student Activities** **Julian Garcia, P.E.**  
626-458-4921  
jgarcia@dpw.lacounty.gov

**Awards** **Hector Bordas, P.E.**  
626-458-5947  
hbordas@dpw.lacounty.gov

## Newsletter Information

*Please send articles or advertising information to the editor*

### **Julia Park**

Tecolote Research, Inc.  
3601 Aviation Blvd., Suite 1600  
Manhattan Beach, CA 90266  
jpark@tecolote.com  
(Phone) 310-536-0011 ext. 152

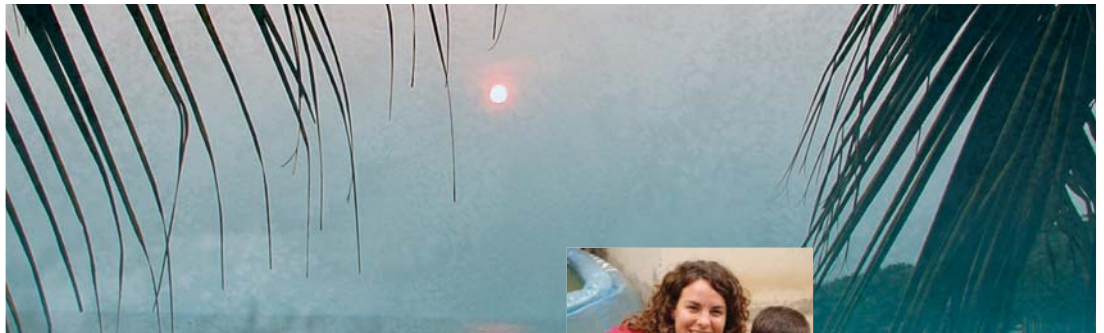
### **JOIN OUR E-MAIL LIST!**

*Keep up to date with all the current events and announcements. Join our e-mail list. Please contact our membership chair for details.*

### **We're on the Web!**

See us at:  
**www.ascemlab.org**

American Society  
of Civil Engineers



### Engineers Without Borders NEEDS YOUR HELP!



### Honduras H2O

La Estanzuela, Honduras, may not be top on many students' lists of places to spend spring break, but it was for members of the University of Southern California Viterbi School's Engineers Without Borders. Students Nate Houk, Kyle Siegal, Chris Roth, Alex John, Liana Ching, Gina Erazo, Allie Anderson, Lucy Hoag and Meghan Gray traveled to the remote town in March



2007 to create a blueprint for a pump, pipeline, water-distribution and water-decontamination

system. They surveyed, measured and tested the water supply, then decided that they could harness the energy from a nearby waterfall to pump



clean water to a storage tank near La Estanzuela. The project involves building 2 kilometers of pipeline, chlorinating the contaminated water and connecting homes that are not currently hooked up to the existing water-distribution system. That will take more trips to Honduras, but there's no shortage of engineering students eager to go.

The USC Chapter of Engineers Without Borders has taken on the significant task of creating sustainable systems for two Honduras communities. Both villages share a single water source—a river one kilometer away—which provides drinking, cooking, and bathing water. This river is contaminated by fertilizers and livestock, making it unsuitable for consumption.



A successful assessment trip to the village of La Estanzuela last March allowed the students to design the project.

They will travel to the village of Corral de Piedras this spring to assess project needs for that community.

If you'd like to sponsor a student's trip to Honduras in 2008 and make donations to fund the anticipated \$30,800 project cost for these important humanitarian efforts, contact Jacquelin Reed at [jacquelin.reed@usc.edu](mailto:jacquelin.reed@usc.edu) or call (949) 436-1983. Gifts of all size are appreciated...and tax deductible!

**Visit the Chapter's Website:**  
[www.ewb-usc.org](http://www.ewb-usc.org)  
to learn more about the project.

## Job Opportunities



### CAD Technician Position Open at Crain & Associates, West Los Angeles

Crain & Associates, a transportation planning and traffic engineering firm based in West Los Angeles, is seeking a CAD Technician I to prepare plans and illustrations. The position requires a minimum of 1 to 2 year experience with AutoCAD, the ability to understand and/or learn to work with civil engineering and traffic drawings, and sufficient artistic skill to prepare illustrations for presentations and technical documents. The CAD Technician I will use AutoCAD to prepare traffic signal, striping and street lighting plans, conceptual layouts for roads and land development, and maps for traffic studies. Job duties include some field work to conduct measures of roadway features and visits to various plan review agencies. A driver's license is required.

See our web site at [www.crainandassociates.com](http://www.crainandassociates.com) for information about our firm. We offer a 4 1/2 -day work week and good benefits. Pay will be commensurate with qualifications. Crain & Associates is an equal opportunity employer. Contact Diana Skidmore at (310) 473-6508 ext. 117, or send resume and cover letter to [employment@crainandassociates.com](mailto:employment@crainandassociates.com).

### Navy Reserve Civil Engineering Opportunities

The Navy Reserve is looking for a few good architects and engineers!

**MIN REQUIREMENTS:** US Citizenship, less than 42 years of age, and a degree in architecture or engineering.

#### Reasons to Join:

- DUTY, HONOR AND COURAGE
- CAREER ADVANCEMENT AND SUCCESS
- MILITARY LIFE AND BENEFITS
- CIVILIAN LIFE AND FAMILY

For more information on part-time officer opportunities in the Navy Reserve, please call:

LT Joe Rystrom, USN Ph 310-877-7115

**ASCE**

Metropolitan  
Los Angeles  
Branch

**MLAB**

Classified



# VALUED

PROJECT MANAGERS

PROJECT ENGINEERS

DESIGNERS  
(MECHANICAL/CIVIL)

ENVIRONMENTAL  
PROJECT MANAGERS

WATER RESOURCES  
PROJECT MANAGERS/  
PROJECT ENGINEERS



HDR, as a part of the Design-Build joint venture, executed the West Basin \$ 52 Million Design-Build Water Reclamation Plant Project meeting challenging work conditions successfully.



HDR worked closely with Caltrans Structures Local Assistance during the analysis and retrofit strategy phase.

Ranked #19 by the Engineering News Record, HDR is seeking qualified engineering candidates in all disciplines (civil, structural, mechanical and electrical) for immediate employment in Southern California.

Visit our web site to learn more about HDR opportunities or submit a resume.

**HDR**

ONE COMPANY | *Many Solutions*<sup>SM</sup>

[www.hdrinc.com](http://www.hdrinc.com)

*American Society  
of Civil Engineers*

**ASCE**

Metropolitan  
Los Angeles  
Branch

**MLAB**

Classified



THE GREAT PARK & HERITAGE FIELDS, IRVINE, CA  
ORANGE COUNTY GREAT PARK CORP & LENNAR COMMUNIT



HOLLYWOOD & VINE MIXED-USE REDEVELOPMENT, HOLLYWOOD, CA  
LEGACY PARTNERS/GATEHOUSE CAPITAL



LEGACY AT STUDIO CITY, STUDIO CITY  
LEGACY PARTNERS

thin king

Explore the possibilities...of working with Fuscoe Engineering, a company that prides itself on providing clients with top quality innovative designs, delivered with heroic service. We have a host of job opportunities waiting for you in four office locations: Irvine, Rancho Cucamonga, Palm Springs and San Diego.

- SENIOR LEVEL MANAGEMENT
- PROJECT MANAGERS
- SR. ENGINEERS/DESIGNERS
- ENGINEERS/DESIGNERS
- ASSOCIATE ENGINEERS/DESIGNERS
- CADD TECHNICIANS



16795 Van Karman, Suite 100  
Irvine, California 92606  
949.474.1960 tel 949.474.5315 fax  
[www.fuscoe.com](http://www.fuscoe.com)

American Society  
of Civil Engineers

**ASCE**

Metropolitan  
Los Angeles  
Branch

**MLAB**

Classified

## Your Career



make the most of it at Leighton



Leighton Consulting, Inc.  
A LAMBERT GROUP COMPANY

For consideration:  
email: [HR@leightongroup.com](mailto:HR@leightongroup.com)  
call: 951-298-0632 ext 107 or 120

41715 Enterprise Circle N, Suite 103  
Terreclia, CA 92590

Immediate openings for all levels of geotechnical  
and environmental consulting professionals  
in Southern California and Phoenix

BOEMPH04

Irving | Los Angeles | Temecula | Rancho Cucamonga | Palm Desert | Santa Clarita | Ventura | Bakersfield | San Diego | Scottsdale

## Advance Your Career to New Heights!

Founded over 175 years ago, Bureau Veritas is a global leader in consulting and compliance services. Locally focused and a recognized leader in understanding what public agencies need to serve their communities, we have fostered a reputation for quality, rapid response, innovation, technical excellence, value creation, and best practices. You will join a firm experiencing dynamic growth and offering a positive, professional, and stable environment with endless opportunities to work on complex and challenging assignments.

We are seeking motivated Discipline Leaders, Project Managers, Civil Engineers, Plan Reviewers, and Designers throughout Southern California in the following service lines:

**Building Safety • Civil Engineering • Construction Management  
Municipal Consulting • Plan Review • Program Management  
Stormwater Compliance**

Our goal is one of high achievement, forward movement, and client service. Our people take personal responsibility for making success happen. We pride ourselves in continually building our expertise to provide more creative and cost-effective solutions to our valued clients. Our success is attributed to our dedicated employees and their ability to anticipate our clients' needs and understand the demands of their organization. We turn challenges into solutions.

Bureau Veritas offers rewarding growth opportunities, and an excellent compensation and comprehensive benefits program.

For more information and to send your resume, contact:

Phone: 800.984.4274 or Fax: 858.451.2848

Email: [patry.jansen@us.bureauveritas.com](mailto:patry.jansen@us.bureauveritas.com)

**VAST OPPORTUNITIES...GLOBAL REACH**



**BUREAU VERITAS**

Your Public Agency Experts.  
Integrated Solutions.  
Proven Results.



11590 West Bernardo Court  
San Diego, CA 92127

[www.us.bureauveritas.com](http://www.us.bureauveritas.com)

American Society  
of Civil Engineers

**11th LA GEO EXPO  
Wednesday April 23, 2008  
1:30 p.m. TO 5:30 p.m.**

*Businesses in the geo-industry have been invited to display their products and services concurrent with the Spring Seminar of the Geotechnical Engineering Group of the ASCE Los Angeles Section.*

If your company would like to exhibit, or if you know of a company that would like to exhibit, please contact:

Tarik Hadj-Hamou, Vice-Chair  
Strategic Engineering and Science  
17701 Cowan - Suite 210  
Irvine, CA 92614  
Phone: (949) 553-8417 ext. 111  
Email: thadj-hamou@sesinonline.net

**SEMINAR SCHEDULE  
Wednesday April 23, 2008**

1:30 – 2:00	REGISTRATION (GEO EXPO)
2:00 – 3:00	PROFESSOR NICHOLAS SITAR
3:00 – 3:30	COFFEE BREAK (GEO EXPO)
3:30 – 4:30	DR. NORMAN A. ABRAHAMSON
4:30 – 6:00	SOCIAL HOUR (GEO EXPO)
6:00 – 8:30	BANQUET
7:00 – 8:00	KEN LEE LECTURE

**GUEST SPEAKERS**

Dr. Geoffrey R. Martin  
2008 recipient of the Ken Lee Lecture Award  
Professor of Civil Engineering  
University of Southern California

Dr. Norman A. Abrahamson  
Engineering Seismologist, Geosciences  
Dept., Pacific Gas and Electric Company

Professor Nicholas Sitar  
Professor of Civil and Environmental  
Engineering  
University of California, Berkeley

**Classified**

**GUEST SPEAKERS**



Dr. Geoffrey R. Martin  
2008 recipient of the Ken Lee Lecture Award  
Professor of Civil Engineering  
University of Southern California



Dr. Norman A. Abrahamson  
Engineering Seismologist, Geosciences  
Dept., Pacific Gas and Electric Company



Professor Nicholas Sitar  
Professor of Civil and Environmental  
Engineering  
University of California, Berkeley

Geotechnical Engineering Group  
of  
Los Angeles Section  
of  
American Society of Civil Engineers  
&  
GEOINSTITUTE



Presents

**THIRTY FIRST SPRING SEMINAR**

**ELEVENTH GEO EXPO**

**FOURTH KENNETH L. LEE  
LECTURE AWARD**

Wednesday April 23, 2008  
Queen Mary  
1126 Queen's Highway  
Long Beach, CA 90802  
Tel: 562 435 3511

**GEOTECHNICAL ENGINEERING GROUP OF  
Los Angeles Section of ASCE &  
GEOINSTITUTE  
Present the**

**THIRTY FIRST SPRING SEMINAR &  
FOURTH KENNETH L. LEE LECTURE  
AWARD**

**Wednesday April 23, 2008**

Queen Mary, Tel: 562 435 3511  
1126 Queens Highway Long Beach, CA 90802

The Geotechnical Group of the Los Angeles Section of ASCE established the Ken Lee Lecture (KLL) award to honor the contributions of Professor Lee to his profession and recognize outstanding achievement in earthquake engineering, earth structures design, and geotechnical engineering.

The 2008 recipient of the KLL Award is **Dr. Geoffrey R. Martin, Professor of Civil Engineering at the University of Southern California.** The 2008 Kenneth Lee Lecture will be delivered after dinner and will include a discussion of effective-stress ground motion response analyses.

During the first afternoon seminar, Professor Nicholas Sitar will discuss seismic lateral earth pressures on retaining structures.

In the second afternoon seminar, Dr. Norman A. Abrahamson will discuss the Next Generation Attenuation relationships and its impact on ground motion site response estimates.

**Pre-Registration:**

One registrant per form. Please duplicate for additional registrants. Payment and completed form(s) MUST BE RECEIVED TOGETHER VIA MAIL BY APRIL 14, 2008

Name (Mr./Ms./Dr.) \_\_\_\_\_  
Organization \_\_\_\_\_  
Address \_\_\_\_\_  
City \_\_\_\_\_  
State \_\_\_\_\_ Zip \_\_\_\_\_  
Phone \_\_\_\_\_  
Fax \_\_\_\_\_  
e-mail \_\_\_\_\_  
Check # \_\_\_\_\_

**Price**

Received 4/14/08 or before ..... \$110.00  
Received 4/15/08 to 4/18/08 ..... \$135.00  
After 4/18/08 & On-Site registration<sup>1</sup>... \$160.00  
Full-Time/Non-Employed Student<sup>2</sup>..... \$35.00

<sup>1</sup> Due to limited seating, you may be turned away if you did not pre-register.

<sup>2</sup> Must provide proof of registration at the door.

**Please enclose your check Payable to ASCE Geotechnical Engineering Group. No refunds for cancellations after April 18, 2008.**

Mail to: J. Adolfo Acosta, Treasurer  
Geotechnical Engineer  
City of Los Angeles  
Dept. of Building and Safety, Grading Division  
201 N Figueroa Street, Third Floor  
Los Angeles, CA 90012  
213-482-0480  
[jesus.acosta@lacity.org](mailto:jesus.acosta@lacity.org)

**ASCE**

Metropolitan

Los Angeles

Branch

**MLAB**

Classified



**civilengineeringcentral.com**  
building teams . engineering careers

*American Society  
of Civil Engineers*

**Graduate Engineer - Structural Engineering Services Group**

Current Opportunities in All Offices

**Minimum Qualifications:**

Master of Science in Civil Engineering with structural emphasis  
Engineer in Training (EIT) preferred

**Position:**

We seek well prepared graduates of top engineering schools to start and build their career at Walter P. Moore. As a graduate engineer, you will participate on project teams for architectural projects of all types, including commercial, sports, healthcare, and public assembly buildings. You will participate in our in-house staff development program.

A sound technical background and enthusiasm for the challenges of designing great structures are required. All qualified candidates should be available to begin work in the United States within two weeks.

Qualified candidates should submit a cover letter and resume via email to: [careers@walterpmoore.com](mailto:careers@walterpmoore.com) or fax "HR" 713-630-7386.

Walter P. Moore is an equal opportunity employer.

**CAD Technician - Structural Engineering Services Group****Qualifications:**

High School Diploma  
Associates Degree - Drafting Technology  
Minimum 3-5 years AutoCAD experience  
Proficiency in AutoCAD 2004+

**Position:**

Walter P. Moore, a national structural engineering firm celebrating its 75<sup>th</sup> anniversary in 2006, is looking for the right individuals to join its Los Angeles office in the role of CAD Technician. This individual will be responsible for preparation of construction documents for structural drawings and details on a variety of large commercial projects. In this position, the individual will be required to work closely with a team of Structural Engineers and other CAD Technicians. Previous experience in the structural engineering field and a can-do attitude are crucial.

Walter P. Moore provides all of its employees with a competitive compensation and benefits package.

Please send your resume with a letter of interest to [careers@walterpmoore.com](mailto:careers@walterpmoore.com).

Walter P. Moore is an equal opportunity employer



Metropolitan

Los Angeles

Branch



American Society  
of Civil Engineers

## Membership Information

National Membership Rates (Please verify rates and grades at <http://www.asce.org/membership>).

<b>Student:</b>	Free
<b>Associate Member:</b>	\$50 year of baccalaureate degree and first year after, then incremental increase to \$180 over five years
<b>Member:</b>	\$180 annually
<b>Affiliate Member:</b>	\$180 annually
<b>Fellow:</b>	\$215 annually
<b>Section (Branch) Dues:</b>	\$45/year

(1) National ASCE Student Membership is FREE! Contact your Student Chapter leaders or Faculty Advisor for additional information.

(2) Online membership renewal available, go to [www.asce.org/renewal](http://www.asce.org/renewal). For non-members, dues for MLAB Newsletter only \$45/year.

Please contact the Membership Chair for application forms, change of address and additional information. To update your information online, go to [www.asce.org/myprofile](http://www.asce.org/myprofile).

For questions on national ASCE membership contact [member@asce.org](mailto:member@asce.org).

## Advertising Rates

All advertising fees fund Branch Student Scholarships.

### Business Card:

\$20/individual issue or \$100/6 issues

-Please send all business card Ads to the News letter Editor.

-Scanned business cards may be e-mailed to the editor at: [andy.g.duong@hdtinc.com](mailto:andy.g.duong@hdtinc.com).

-Cards are due by the 15th of each month.

-Please send all checks (made payable to "ASCE Metropolitan Los Angeles Branch") to the Branch Newsletter Editor.

### Job Listing:

Please forward job listing to the editor through e-mail to: [jpark@tecolote.com](mailto:jpark@tecolote.com)

**Full Page:** \$150/issue

**Half Page:** \$100/issue