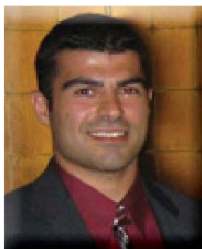


President's Message

by Serge Haddad, P.E.

Welcome to the 2009-10 MLAB fiscal year. My name is Serge Haddad and I am honored to serve as your new President. The pursuit of professional prestige, government affairs advocacy and technical group involvement are the principal focus of your new board. October 1st marked the beginning of the MLAB year and the start for your enthusiastic and committed Board of Directors.



I want to thank my predecessor Androush Danielians for setting a great example as President. Under his leadership, we hosted four successful luncheons, increased dues paying membership by an incredible 40%, and supported the initiatives of our technical groups and Younger Member Forum (YMF). I know his ASCE service will never cease. I also want to thank Steve Milewski, who served as MLAB Treasurer for three years. Steve had the temperament to bring the team together and resolve disputes. Finally, I would like to recognize the achievements of Karen Sepulveda. Karen brought me onto the MLAB Board as Vice President two years ago. She set a great example and was devoted to the success of our student membership, a focus I promise to continue during my term as President.

Allow me to introduce you to your newest officers, Julian Garcia (Secretary) and Lorena Arce (Treasurer). I have known Julian and Lorena for seven years. Lorena is responsible for my ASCE involvement after college. She inspired me to join YMF and eventually follow in her footsteps as YMF President. Julian showed me a similar path as YMF President. These two carry a great amount of knowledge and skill. I've always believed the roles of Treasurer and Secretary are the most important and difficult roles in any organization. The successful execution of the duties of these positions will dictate the level of success for this year. I have the utmost confidence in the commitment these two will dedicate to their responsibilities.

Andy Duong and Julia Moye are your President-Elect and Vice President, respectively. Andy will be spearheading the daunting task of the MLAB Infrastructure Report Card – arguably the single most publicized ASCE project. This colossal task will require Andy to oversee 9 subcommittees (one per grade), coordinate with a dozen Los Angeles agencies, and negotiate a conflicting schedule of deadlines. As Vice President, Julia Moye will ensure that our 5 MLAB Technical Groups will have all the resources and information they need to continue their success. It is my hope that their collective focus will bring much needed political attention to our failing infrastructure and the need for increased investment in infrastructure projects.

On Thursday October 8th, over 75 political leaders, professional leaders and MLAB supporters gathered in Los Angeles City Hall to award members and install officers of the Branch, YMF and Student Chapters. Details of this amazing event, marvelously organized by Amber Girard and Julia Moye, can be found in this newsletter on page 2. This event's underlying purpose was to be the staging point for reassessment of ASCE's fundamental purpose and future. I love ASCE. I believe in its potential and I owe it a lot for assisting me in my career and for introducing me to the most interesting and amazing people in my life. I want to make it my goal to deliver on this potential; to focus the spotlight on the weaknesses I believe are in ASCE and engineer a way to fix them.

Our profession is taking a huge blow during this economic crisis; furloughs, pay cuts and unemployment are putting a strain on families, organizations and infrastructure. Decisions about investments are being made by leaders that have good intentions but too often lack an understanding of scientific and engineering principles. They dictate the direction of our profession and the fundamental hope of remaining a first world country. I will lead the MLAB Board in a pur-

See [President's Message](#)... Page 6

INSIDE:

MLAB Installation

ATTG

Future Cities Competition

Branch = Section?

CONTENTS:

President's Message	1 & 6
MLAB Installation	2-3
Air Transport Technical Group	4
Future Cities Competition	4-5
Report from USC ASCE	5
MLAB YMF Update	5-6
Does Branch = Section	6-7
Water Resources Group	6
Membership Drive	7-8
MLAB Member Grades	8
MLAB Funnies	9
New Members	10
Committees/Calendar/ Newsletter Info	11
Executive Board/ Committee Chairs	12
Classifies	13
Membership Info	14



Metropolitan
Los Angeles
Branch



A Grand Affair: 2009 MLAB Installation and Awards Dinner

by Julia Moye, P.E. - Vice President

On Thursday, October 8th the Metropolitan Los Angeles Branch (MLAB) of the American Society of Civil Engineers (ASCE) held its annual Installation and Awards Dinner. The event, held in City of Los Angeles' scenic Tom Bradley Room, was elegant and intimate. The evening began with a hosted reception. The eighty event attendees enjoyed conversing with each other while admiring the scenic 360° views from the top of City Hall. Attendees also had the opportunity to chat with some of the distinguished guests in attendance at the event. Distinguished guests from the profession included, ASCE Los Angeles Section President Jay Higgins, Structural Engineers Association of Southern California (SEAOSC) President Michael Cochran, Los Angeles Department of Transportation (LA DOT) Assistant General Manager John Fisher, Los Angeles City Engineer Gary Lee Moore, and President and CEO of the Los Angeles Housing Authority Rudy Montiel. In addition to these leaders in our profession, a number of political officials were also present or represented including Board of Public Works President Cynthia Ruiz, Bernard Tolliver from the Office of State Senator Rod Wright, John Bwarie from the Office of Councilmember Greig Smith, and Erik Sanjurjo from the Office of Councilmember Jose Huizar.

As the evening progressed, the attendees sat down together to enjoy a catered dinner. Each table was given two questions to discuss while eating. These questions were meant to encourage people to focus on their role in MLAB and what MLAB can do to better serve its membership. Discussions at each table around the room were lively and thought provoking

After dinner, Serge Haddad served as moderator. He opened the floor to an open discussion with the attendees. The first question posed to the group was "Should MLAB ASCE stay out of Government Affairs and remain 'neutral', if so, what are the consequences to a lack of involvement?" The answer from the audience was an overwhelming "no" as attendees stressed the importance of political involvement in shaping and ensuring the advancement of the nation's infrastructure and the civil engineering profession. Other questions discussed by the audience included "What are some of the stereotypes that limit the potential of engineers in the decision

making political arena?" and "What incentives will influence you to become an active MLAB Board member?"

Overall, active involvement in both politics and ASCE were proclaimed as tools in both one's personal development and the ensured success of the profession. The contributions and ideas shared from this diverse group of students, industry leaders, politicians, and engineering professionals will be considered by the incoming Board as they prepare their strategic plan for the year. All recommendations were written down and collected.

Subsequent to the group discussion, 2008-2009 President Andrroush Danielians reflected on what a remarkable year it was for MLAB ASCE. He highlighted some of the notable accomplishments for the year which included four speaker presentations, a 40% increase in Section dues paying members, and the hosting of a full day training program on Government affairs. Danielians then recognized all of last year's officers for their outstanding accomplishments. He also invited the new MLAB officers to the front of the room:

President Serge Haddad, P.E.

City of Los Angeles Department of
Water and Power

President-Elect Andy Duong, P.E.

HDR Engineering, Inc.

Vice President Julia Moye, P.E.

City of Los Angeles Bureau of Engineering

Secretary Julian Garcia, P.E.

County of Los Angeles Department
of Public Works

Treasurer Lorena Arce, P.E.

Hilti, Inc.

Finally, Danielians invited up incoming officers from the MLAB Younger Member Forum (YMF) and incoming officers from local ASCE student chapters. ASCE officers from Loyola Marymount University, California State University Los Angeles, California State University Fullerton, and the University of Southern California were in attendance. Jay Higgins, ASCE Los Angeles Section President, read the oath and

See [A Grand Affair](#)... Page 3

the officers faithfully committed themselves to serving in their elected position to the best of their ability.

Hector Bordas, Awards Chair, followed the Officer installation and presented the MLAB Awards to outstanding projects and individuals:

2008-2009 MLAB Award Winners

Outstanding Government Civil Engineering Project

Repairs to 48-inch Outfall Sewer under the LA River
City of Los Angeles

Outstanding Private Sector Civil Engineering Project

California State Route 66 Adaptive Traffic Control System
Minagar and Associates, Inc.

Outstanding Sustainability Project

Harbor Replacement Station and Jail
City of Los Angeles

Outstanding Architectural Engineering Project

Andres and Maria Cardenas Recreation Center
City of Los Angeles

Outstanding Civil Engineer in Government

Shahram Kharaghani
City of Los Angeles

Lifetime Achievement Civil Engineering

Clark W. Robins
City of Los Angeles

Outstanding Younger Civil Engineer

Richard Louie
City of Los Angeles

Each recipient was given an opportunity to address the audience and all expressed their gratitude to be receiving an award from MLAB.

As the event came to a close, attendees congratulated the award winners and newly installed officers and said their goodbyes to friends old and new. The newly elected board members pledged to all attendees to continue in the tradition of delivering professionalism and prestige to the Branch. The Branch looks forward to your active involvement in the coming year to encourage its success and continued growth.



MLAB Award Winners with City Engineer Gary Lee Moore



Past and new MLAB & MLAB YMF officers and chairs



Past President Androush Danielians recognizing officers and chairs

Airport Transport Technical Group (ATTG) - Los Angeles Section Metropolitan Los Angeles Branch

by Craig Halvorson, Vice Chairperson

Our guest speaker was Michael Feldman, the Deputy Executive Director of the Facilities Management Group at the Los Angeles World Airports. Mr. Feldman was appointed to this position in May 2009. Prior to joining LAWA, he was the Deputy Managing Director at the Port of Seattle's Aviation Division, where he was responsible for the operational integrity of Seattle – Tacoma International Airport. Mr. Feldman gave us a presentation on his plan to implement a new Sustainable Facilities Management Program at LAWA.

Mr. Feldman stated that LAWA needs to develop a comprehensive inventory and condition assessment of all its existing facilities, assets and systems. This inventory and assessment will allow LAWA to develop a comprehensive facilities management program that will significantly improve the quality of the Airport facilities. This program will also allow LAWA's maintenance staff to spend more its resources on preventive maintenance and fewer resources on trouble calls and repairs.

Mr. Feldman explained that LAWA must strategically balance the capital and operating costs of its Capital Facilities, which is approximately 64% of depreciated book value of its entire asset portfolio. The management of LAWA's facilities maintenance program is an important priority that can affect the cost of maintenance and LAWA's ability to generate revenue from its Capital Facilities. Mr. Feldman stated that for every \$1 spent on construction, LAWA might spend approximately \$3 to \$5 on operations and maintenance over the life of the asset. Therefore, much consideration should be given to managing the ongoing costs of maintaining and operating LAWA's facilities. Mr. Feldman also stated that it is very important to carefully evaluate the Facilities Life Cycle in order to properly plan on replacing the facility before it reaches a state of Functional Obsolescence. The rule of thumb for facility deterioration is that the facility will deteriorate 20% in the first 80% of the building lifecycle and it will deteriorate 80% in the last 20% of the building lifecycle.

Mr. Feldman stated that LAWA is in the process of selecting a consultant to be a part of an integrated facility management team that will assist LAWA to implement the new Facilities Management Program (FMP). This program



ATTG Board of Directors from left to right: Ralph Taber, Secretary; Ryan Damery, Treasurer; Lilith Terry, Director at Large; Michael Feldman, Deputy Executive Director, LAWA; Matt Ulukaya, Director at Large; Craig Halvorson, Vice Chairperson

will include a conditions assessment and a comprehensive inventory of all of LAWA's assets. LAWA will also select FMP software platform, establish design guidelines and specifications and establish project decision making tools to support capital improvement decisions.

.....
**Future Cities Competition Needs You...
to be an Engineer Mentor!**

by Fred A. Gonzalez, MBA, P.E.

Future City is an organization comprised of many engineering organizations, including ASCE, that provides engineering education outreach to middle school students. This outreach is in the form of a competition of teams composed of 3 middle school students, a science teacher, and an engineer mentor. Together the team works on designing a city of the future using SimCity 4 Deluxe™ software, preparing an abstract and essay about their city, building a scale model of the city using recyclable materials, and presenting the city to a team of judges at the Los Angeles Regional Competition, held at the Southern California Science Center on the last Saturday of January (subject to change).

The LA Regional Future City Committee would like all engineers, registered or not, to participate in this event by volunteering to be an engi-

See **Future Cities** . . Page 5

neer mentor for a local middle school. Current opportunities are with schools in Los Angeles (Sawtelle District), Upland, Norwalk, Lancaster, and Pomona. Engineers are encouraged to invite middle schools near their home or workplace that are not currently registered to participate in this enriching activity.

The commitment includes meeting with and advising the team about their deliverables at a time that is mutually convenient to all. It is advantageous for mentors to start working with their teams early in the Fall, so that there will be plenty of time to meet the deadlines for the deliverables leading up to the January competition.

Winners of the Regional Competitions receive an all-expense paid trip to Washington, D.C. to compete in the National competition. Past winners of the National competition have received all-expense paid trips to NASA's Space Camp in Huntsville, Alabama.

Report from USC ASCE

by Kyle Burnham, USC ASCE Chapter President

As fall arrives and students head back to school, USC ASCE has picked up right where it left off at the end of last spring. In fact, rules for both the concrete canoe and the steel bridge competitions have been released! Design work is well underway for both teams and construction is scheduled to begin before the semester's end. In addition to the traditional design teams, this year USC ASCE undertook a new program targeting incoming freshmen and transfer students. The big buddy program partnered new students in Civil engineering with current students to provide a friendly face to offer advice, support and the occasional cup of coffee. To date, more than 30 freshmen and transfers are taking part in the program and we have seen our membership numbers for those groups rise drastically as a result.

USC ASCE embarked into uncharted waters, sending six (6) students to the ASCE National Conference in Kansas City. Additionally, following the longstanding ASCE tradition of evaluating infrastructure, USC ASCE is undertaking an Infrastructure Report Card for USC and the surrounding community. As always we look for and welcome support from industry. If you are interested in participating in any of USC ASCE's activities, speaking at a general meeting or sponsoring USC ASCE, please e-mail us at uscasce@usc.edu.

More information about Future Cities can be obtained at: www.futurecity.org

To become an engineer mentor and make a difference in the lives of our youth, please contact the Los Angeles Region Engineering Mentor Coordinator:

Fred A. Gonzalez, MBA, P.E.

Los Angeles County Department of Public Works
6th floor, Watershed Management Division
900 S. Fremont Avenue
Alhambra, CA 91803
ph 626-458-5948
fx 626-457-1526
fgonzal@ladpw.org
fgonzaleig@yahoo.com



MLAB YMF Update

by Herendira Molina, President MLAB YMF

The new fiscal year is finally here and MLAB YMF is eager to get the year started. As the 2009-2010 MLAB YMF President I am looking forward to serving our young professionals. Our board of directors is composed of six executive officers and over a dozen committee chairs. They have been working very hard in planning our upcoming year and I'm happy announce that we are all in for an amazing year.

With less than a month into our year, we've already had our first general meeting and our first university student and YMF mixer. Furthermore, the rest of our committee members have been diligently working in planning K-12 student outreach activities, community service events, our annual student night and job fair, and our annual popsicle stick bridge competition, just to name a few. With the type of events we are planning, we hope to give back to our communities, promote our profession, educate the public and plant the engineering seed in the minds of our future engineers.

I have had the privilege of working closely with all of the board members and have seen their dedication; leadership and professionalism help MLAB YMF reach its goals. I am confident that with the continual involvement of such board members and with the help of MLAB and LA Section our YMF team will not only do its best to meet its goals this year, but also set the bar higher.

See MLAB YMF . . Page 6

As the MLAB YMF president I personally invite you to join us at our next event. We are always looking for volunteers and new members. Without you, most of our events would not be possible, so please join us and help us make a difference. Please visit our website www.mlab-ymf.org for more information about our efforts and while you are there join our mailing list to automatically receive our weekly e-mail announcements.

Thank you for allowing me this great opportunity and I am looking forward to serving you this year.

.....
Does Branch = Section?

by Karen Sepulveda

This year became a transitional one for me. After rotating off the MLAB Board and on to the Section Board I realized that I have been involved directly with the Branch for over six years. I suppose you can take the girl out of the Branch, but you can't take the Branch out of the girl.

For those unfamiliar with the structure of ASCE and how the Section relates to the Branch, here's a real quick explanation. MLAB is one of seven branches in the Los Angeles Section. The Section ranges as north as San Luis Obispo to as south as Orange County. MLAB is the largest Branch in the Section carrying over 40% of the Section's membership with geographic boundaries inclusive of Los Angeles County. Typically the Branch will carry out "grassroot" efforts with the Section tending toward a bigger picture. Although the end goals are the same, primarily the promotion of the engineering profession, each has a different manner of achieving the Society's goals.

The truth is that you can effectively be both a Branch and Section member, and I realized this as I looked over the goals that President Higgins has set for the Section and saw how closely tuned they are to those of MLAB Branch President Haddad. Never before in my experience with both the Section and Branch have I seen so much continuity and teamwork. President Higgins is committed to three primary goals: developing leadership, expanding legislative activities and building on pre-college student outreach successes.

See **Branch = Section** . . Page 7

suit to answer the call to action as dictated by ASCE Vision 2025. It is my dream that ASCE will one day be responsible for inspiring civil engineers to pursue careers in politics and I plan to motivate MLAB to serve its membership with that intent, but we can't do it alone, we need the experience and wisdom found in our profession, we need you to be actively involved.

I am confident that this year's Board will bring an unprecedented amount of enthusiasm and commitment to MLAB. I'm proud to acknowledge that MLAB has one of the most active Government Affairs Committees in the country. In August the committee hosted an all day session - *Engineers and Politics: Workshops Empowering Engineering Advocates*. Over 50 people drove and flew from all parts of California to spend their Saturday to contribute to a worthwhile cause. This event proved to me that the amount of active involvement by our members is directly linked to the type of programs we offer. With this new tail wind of GAC momentum, I believe the course will change and perhaps in ten years my dream will be a reality.

I am very proud to be a part of this family of brothers and sisters. We promise to lead by example and to bring prestige to MLAB. Nothing is impossible when you have the collaboration of a great team and the commitment to make a positive difference. I look forward to serving them and you as President of the Metropolitan Los Angeles Branch.

Keep bleeding ASCE!

.....
Water Resources Group Update

by David Pedersen

READY TO GET INVOLVED?

The Water Resources Group is looking for new members to assist with the preparation of the drinking water category of the 2009 ASCE Los Angeles County Infrastructure Report Card. This is a great opportunity to get involved in an important Branch activity and get to know fellow ASCE members in the process. If you are interested, please contact David Pedersen at (562) 861-0316 or dpedersen@dpw.la-county.gov.

It so happens that MLAB has worked very hard on these very same goals. MLAB has produced a great bunch of future engineering leaders, mostly coming up through the ranks of YMF, and now representing a great portion of Branch leadership. I don't think there's any limit to the potential for these leaders, and future leaders, changing the face of the profession. MLAB and MLAB YMF have also taken enormous strides in the second goal related to legislative activities having recently held a successful program that intends to organize efforts at a grassroots Branch level as well as Section-wide and in the community. This effort was led by Jeff Girard and Julian Garcia as well as a support system of resources from the Branch.

I also believe that MLAB's K-12 program has taken off dramatically under the leadership of Heren Molina who also has a tremendous amount of support within the organization. It is my belief that what MLAB is attempting and accomplishing will become an example and template for Branches and Sections Society-wide.

As the incoming Section Vice President for Student Activities, my intention is to identify what is working with regard to K-12 efforts and expand that to other Branches in the Section still developing their programs. I'm also certain that even an up and coming successful K-12 program within MLAB will still be open to what is working elsewhere to see if adaptations can be made. What a positive time for the Society to implement programs bringing awareness to the general public regarding the engineering profession, the need for engineers and the decaying state of the infrastructure. If you have been considering involvement in the Branch or Section, this is the absolutely the time to get involved. There's a lot happening and I'm proud to be associated with not only these efforts, but the outstanding engineers behind them.

My conclusion is the Branch doesn't imply Section, and each has a different function, but not different goals. With cooperative efforts we can be rowing similar oars in unison working our way up the same river. I bet we'll get there a whole lot faster!

Membership Drive

by Androush Danielians, D.Sc., P.E., MLAB Past President

It is that time of the year for us to renew our ASCE membership. Many of us are aware of the benefits that ASCE provides and renew our membership on a regular basis. On behalf of the Society, I would like to thank you for your loyalty to our profession and the society that strives hard to meet the needs of the civil engineering community. We however need to do more. We need to recruit new members and make sure that we pay our Section dues. There are several civil engineers who are not a member of ASCE and we need to encourage them to join. Also, only about one half our Branch members pay their Section dues. We can do much better! To keep you informed about the advantages of ASCE membership and the new ASCE benefits, I am listing the following links that would be particularly useful both for current members and new recruits.

- [2009-2010 ASCE Member Resource Guide](#) is specially useful for you to know what benefits and resources are available through ASCE.

- [ASCE eLearning Workshops](#) is free member only access to live web learning programs designed to help you hone critical career skills.
- [Expanded eMentoring Programs](#) – Mentors and protégés benefit from an extended personal online network to exchange ideas, learn new skills, and share experiences.
- [Participate in Engineers without Borders-USA](#) to help bring sustainable engineering projects to developing communities world wide by joining or renewing with EWB-USA at an exclusive ASCE member discount.

ASCE provides you with three easy ways to renew your membership:

1. Mail in your 2010 renewal form.
2. Renew online at www.asce.org/renewal and help ASCE "go green" by conserving the paper used in mailing your renewal back and also saving on printing costs for future renewal notices.

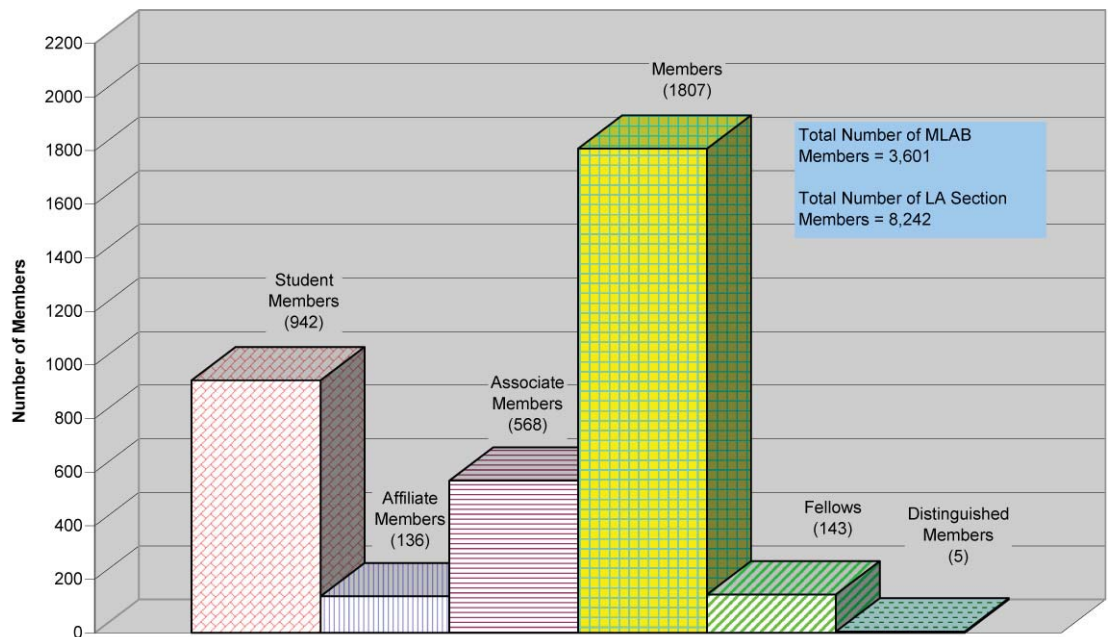
See [Membership Drive](#)... Page 8

3. Call ASCE Customer Service at (800) 548-ASCE (2723) or (703) 295-6300 between 9:00 a.m. – 5:00 p.m. ET, Monday-Friday.

And once again, please do not forget to pay your Section dues. The Section dues determine the budget that gets allocated to the Branch. Those funds are needed for the Branch to provide you the services and programs that we bring to you throughout the year. We have also

worked closely with ASCE membership department to make sure that the corporate members have a seamless method of paying their Section dues. All corporate members were sent a single renewal invoice for \$45 for their Section dues and we urge all of our corporate members to please turn in their renewal forms and make their Section dues payment.

Metropolitan Los Angeles Branch (MLAB) Member Grades



Engineering Euphemisms

We all know a euphemism is the substitution of an agreeable or inoffensive expression for one that may offend or suggest something unpleas-

ant. Below are a few euphemisms that you can use when you are discussing your engineering job with non-engineers.

What You Actually Say

A number of different approaches are being tried

We are taking a fresh approach to the problem

There is close project coordination

This will be a major technological breakthrough

The project manager has assured the client they will be

pleased with the outcome

Preliminary operational tests were inconclusive

Test results were extremely gratifying

The entire concept will have to be abandoned

We are working through the process

Good suggestion; we'll look into it

Please note and initial this draft report

The True Meaning

We still don't know what we're doing

We just hired three kids fresh out of college

We know who to blame

It looks very hi-tech but still doesn't work

We are so far behind schedule the customer will be happy to get it delivered

The darn thing blew up when we threw the switch

We were so surprised the stupid thing works

The only person who understood the thing quit

It's so wrapped up in red tape that the situation is hopeless

Forget it! We have enough problems for now

Let's spread the responsibility for any errors

New ASCE MLAB Members

Robel	Afewerki	Samuel	Levy
Beatriz	Aguilar	Vicky	Li
Khalid	Alsultan	Eric	Lissner
Michael	Anderson	Jonathan	Lo
Edna	Anicete	Holly	Maag
Eric	Arnell	Geetika	Maheshwari
Edward	Bader	Romaina	McLeod
Cary	Baker	Hany	Michael
Raza	Baqai	Joanne	Michell
Matthew	Bartz	Alexandre	Msika
Katherine	Belluomini	Joshua	Mwiti
Jason	Bendat	Muriel Nina	Nacar
Hirak	Buch	Ricardo	Naranjo
Robert	Burky	Len	Nicholls
Edgar	Cabrera	Israel	Ola
Bianca	Cardenas	Stephanie	Olague
Nathan	Carrasco	Ernesto	Pamada
Henry	Castro	Vikram	Pandurangan
Chi Yip	Chan	Pushparaj	Parab
Alisa	Cheowtirakul	Regan	Patterson
Steve	Chiang	Jerry	Perser
Ka U	Chon	Danny	Pierce
Palvo	Chrysovergio	William	Pollard
Richard	Corral	Ruwanka	Purasinghe
Cale	Crawford	Evan	Qiu
Kelsey	Curtis	Chiming	Qu
Mark	Dannettel	Carly	Rask
Jordan	Dawn	Edgar	Rocha
Alma	De Haro Espinoza	Jennifer	Rodriguez
Louis	Diaz	Arvind	Sahdev
Robert	Ebert	James	Shieh
Sara	Esparza	Manpreet	Singh
Vanessa	Estrada	Aaron	Soon
Gil	Evangelista	Elena	Soto
Caroline	Fletcher	Matthew	Stafford
Sarah	Fung	Clare	Steninger
Taylor	Gray	Deborah	Sun
Jordan	Hair	David	Sunada
Michael	Harmon	Chay	Tang
Henry	Huang	Karl	Tingwald
Chanh	Huynh	Jordan	Tseng
Zachary	Johnson	Michael	Uemura
Jae Wook	Jung	Felix	Velasco
Hanan	Kamal	Charlotte	Vilkus
Joon	Kang	Brendan	Wang
Kevin	Kawakami	Kyle	Wike
Artoosh	Khachikian	Lee	Witbeck
Ryan	Knight	Jonathan	Wright
Dan	Krief	Hae-Bum	Yun
Karl	Kumamoto	Benjamin	Zeng
Michael	Kwok		
Megan	Langhals		
Roberta	Lau		



Metropolitan
Los Angeles
Branch



American Society
of Civil Engineers

The Metropolitan Los Angeles Branch is looking for interested members to serve on the following Committees:

- | | | | |
|---|-------------------------------------|---|---|
| <input type="checkbox"/> Awards | <input type="checkbox"/> Membership | <input type="checkbox"/> Programs | <input type="checkbox"/> Student Activities |
| <input type="checkbox"/> Government Affairs | <input type="checkbox"/> Newsletter | <input type="checkbox"/> Public information | <input type="checkbox"/> Technical Groups |
| <input type="checkbox"/> Infrastructure Report Card | | | |

Name: _____

Phone: _____ Fax: _____

E-Mail: _____

If you are interested in serving on a Metropolitan Los Angeles Branch committee, please check the appropriate box, fill in necessary information below, and return to:

Serge Haddad, P.E., President, MLAB

Work: 213-367-8774 Fax: 213-367-6661 E-mail: serge.haddad@ladwp.com

Calendar of Upcoming Events

November 2009

- 17 Air Transportation Technical Group presentation by Jeffrey Sedlak on the Long Beach Airport Capital Improvement Program: 11:00 AM
- 18 MLAB Board Meeting: 5:30 PM
- 18 MLAB YMF Board Meeting: 6:30PM
- 19 Government Affairs Committee Meeting: 6:00 PM
- 19 OC Branch Installation Dinner (Special guest: Kathy Caldwell, Society President-Elect)
- 19 ACE Mentoring Program, Networking event featuring Art Leahy & Paul Taylor of LACMTA: 5:00 PM

December 2009

- 2 ASCE LA Section Board Meeting: 7:30 AM

Newsletter Information

Please send articles or advertising information to the editor

Patrick Nicholson

AECOM
300 S. Grand Ave., 2nd Floor
Los Angeles, CA 90071
Patrick.Nicholson@AECOM.com
(Phone) 213-330-7289

JOIN OUR E-MAIL LIST!

Keep up to date with all the current events and announcements. Join our e-mail list. Please contact our membership chair for details.

We're on the Web!

See us at:

www.ascemlab.org



Metropolitan
Los Angeles
Branch



Executive Board Members and Committee Chairs

President **Serge Haddad, P.E.**
213-367-8774
serge.haddad@ladwp.com

Past President **Androush Danielians, D.Sc., P.E.**
213-330-7211
androush.danielians@accom.com

President Elect **Andy Duong, P.E.**
562-264-1100
andy.duong@hdrinc.com

Vice President **Julia Moye, P.E.**
630-415-9567
julia.moye@lacity.org

Treasurer **Lorena Arce, P.E.**
562-448-4526
lorena.arce@hilti.com

Secretary **Julian Garcia, P.E.**
626-458-4921
jugarcia@dpw.lacounty.gov

Awards **Hector Bordas, P.E.**
626-458-5947
hbordas@ladpw.org

**City of L.A.H.S.
Competitions
Committee** **Julia Moye, P.E.**
630-415-9567
julia.moye@lacity.org

**Government
Affairs** **Julian Garcia, P.E.**
626-458-4921
jugarcia@dpw.lacounty.gov

**K-12 Outreach
Chair** **Herendira (Heren) Molina**
818-331-8844 (cell)
heren.molina@ppcco.net

Membership **Ciara Barnett, P.E.**
626-319-0441
cbarnett@dpw.lacounty.gov

**Programs
Chair** **Vacant**

**Public
Information** **Monique Aguilar, P.E.**
562-590-4143 ext. 3264
maguilar@polb.com

**Student
Activities** **Jane Tran**
408-207-5436
jane.tran@hatchmott.com

Newsletter Editor **Patrick Nicholson, P.E.**
213-330-7289
patrick.nicholson@AECOM.com

**Air Transport
Technical
Group** **Charles H. Adams, P.E.**
213-239-1349
charles.adams@jacobs.com

**Forensic
Engineering
Technical Group** **Debanik Chaudhuri, Ph.D., P.E.**
310-754-2710
dchaudhuri@exponent.com

**Geotechnical
Group** **Tarik Hadj-Humou**
949-553-8417
thadj-humou@sesinonline.net

**Hydrology and
Hydraulics
Technical Group** **John E. Shamma, P.E.**
213-217-6409
jshamma@mwdh2o.com

**Waterways,
Harbors and
Coastal
Engineering** **Carlos Baldenegro, P.E.**
310-732-3053
cbaldenegro@portla.org

**Water Resource
Technical Group** **Dave Pedersen, P.E.**
626-300-3302
dpedersen@dpw.lacounty.gov

**Infrastructure
Report Card** **Andy Duong, P.E.**
562-264-1100
andy.duong@hdrinc.com

American Society
of Civil Engineers

CAREER OPPORTUNITIES AT GEODESIGN



Senior Geotechnical Engineer and Project Engineer

GeoDesign, Inc., a dynamic and emerging geotechnical and environmental consulting firm, is currently seeking to fill open positions for a **Senior Geotechnical Engineer** and a **Project Engineer** in our Anaheim, CA office.

These positions will support a long-term, multi-million dollar, public works contract. Successful candidates must have exceptional technical capabilities, particularly in geotechnical earthquake engineering.

Prerequisites include:

Senior Geotechnical Engineer

- Minimum 10 years geotechnical project management experience
- Bachelor's and Master's degrees in Civil and/or Geotechnical Engineering
- Professional Engineer license (*Geotechnical Engineer license a plus*)

Project Engineer

- Minimum 3 years geotechnical project management experience
- Bachelor's degree in Civil and/or Geotechnical Engineering (*Master's a plus*)

Please submit your resume and references to: hrdept-ana@geodesigninc.com.
References must be provided and will be validated.

For more information about GeoDesign and to see our full ad, please visit www.geodesigninc.com

GeoDesign, Inc. is an equal opportunity employer

Geotechnical

Environmental

Geological

Hydrogeological

Pavement Design



Your Ad here!

Advertise in the MLAB Newsletter and reach our 3,600 engineers.



Metropolitan

Los Angeles

Branch



American Society
of Civil Engineers

Membership Information

National Membership Rates (Please verify rates and grades at <http://www.asce.org/membership>).

Student:	Free
Associate Member:	\$50 year of baccalaureate degree and first year after, then incremental increase to \$180 over five years
Member:	\$180 annually
Affiliate Member:	\$180 annually
Fellow:	\$215 annually
Section (Branch) Dues:	\$45/year

(1) National ASCE Student Membership is FREE! Contact your Student Chapter leaders or Faculty Advisor for additional information.

(2) Online membership renewal available, go to www.asce.org/renewal. For non-members, dues for MLAB Newsletter only \$45/year.

Please contact the Membership Chair for application forms, change of address and additional information. To update your information online, go to www.asce.org/myprofile.

For questions on national ASCE membership contact member@asce.org.

Advertising Rates

There are currently 3,601 members of MLAB that read the bimonthly newsletter. Placing a business card in the news letter is a great way to support the ASCE local branch. Also placing your advertisement or job posting in the newsletter is the best way to reach the crème of the engineering crop. All advertising fees fund Branch Student Scholarships.

Business Card:

\$175 for a full year (6 issues)

- Please send all business card ads to the News letter Editor.
- Scanned business cards may be e-mailed to the editor at: patrick.nicholson@AECOM.com
- Cards are due by the 15th of each month.
- Please send all checks (made payable to "ASCE Metropolitan Los Angeles Branch") to the Branch Newsletter Editor.

Ads/Job Listing Per Month:

Please forward job listing to the editor through e-mail to: patrick.nicholson@AECOM.com

1/8 Page: \$125

1/4 Page: \$200

1/2 Page: \$300

1 Page: \$400